

A full-page underwater photograph of two divers. The diver in the foreground is a man with a beard, wearing a black wetsuit with 'BARE' and 'Fury' logos, a black BARE diving mask, and a black BARE regulator. He is holding a black BARE regulator. The diver in the background is a woman wearing a black wetsuit with 'BARE' and 'Fury' logos, a black BARE diving mask, and a black BARE regulator. She is holding a black BARE regulator. The background shows a rocky underwater landscape with some green algae or coral. Bubbles are visible rising from the divers.

Zeagle[®]

TESTED. TRUSTED.

2025 BUYER'S GUIDE



// SOMETIMES DEFIANT. BUT ALWAYS COMPLIANT.

BERRY COMPLIANT & MADE ON AMERICAN SOIL.

Zeagle supports military, commercial and public safety divers around the world with Berry Compliant BCDs that are made on American soil. Our BCDs serve those who serve their country, risk their lives, and dare to go where others don't in pursuit of something bigger. The Berry Amendment (Title 10, Section 2533a of the U.S Code) requires the Department of Defense to operate with American-made products. Zeagle's tested and trusted line of BCDs include the Ranger, Ranger LTD, Stiletto, Zena, SAR and Code 911 to ensure all military and Search and Rescue personnel comply with the Berry Amendment.

WHY ZEAGLE?

Dennis Bulin jumped out of airplanes for the thrill of it. Skydiving was his passion, but his sights were set on innovating the scuba diving industry. In 1979 he applied the same Ripcord technology in skydiving to Buoyancy Compensators in scuba diving—and just like that, Zeagle was born. Bulin believed that to get things done, he had to do them himself. Zeagle has been doing things our own way ever since.

In the '80s, we launched the industry's first Ripcord Release System. In the '90s we patented our Personal Fit System™, we produced dive's first Tech BCD, and shifted the industry like never before to focus on heavy-duty professional style products using stainless steel hardware and ballistic materials. It's Berry Compliant and trusted by the U.S. Military and Search and Rescue teams around the globe. We scrutinize every stitch, every material, every solution. Our gear is purposeful. If we believe something needs reinforcing, we reinforce it.

When divers begin their pursuit of the vast unknown with Zeagle, there's nothing they can't conquer - because Zeagle challenges the standards in pursuit of tougher, tested, more trusted dive gear.

ZEAGLE WARRANTY

LIMITED LIFETIME WARRANTY

All our BCDs are hand sewn from the best available materials and heavily reinforced at all stress points. Our style of construction is labor intensive and expensive, but it results in a more durable, better fitting BCD. Individual components of the system are replaceable or repairable if damaged.

BCD WARRANTY

LIMITED LIFETIME GUARANTEE TO THE ORIGINAL OWNER (All models except Marina, Bravo, Resort+, Escape and Sport BCDs), LIMITED TWO YEAR WARRANTY TO ORIGINAL OWNER (For Scout, Resort+, Marina, and Bravo BCD's)

Your BCD is guaranteed against defects in materials and workmanship. This guarantee does not cover damages from accident, abuse, neglect, alterations, improper usage, normal wear & tear or failure to provide reasonable care. To validate your warranty you must register online at the Huish Outdoors Hub within 30 days of purchase. All warranty claims will be handled through Zeagle, or an authorized Zeagle Dealer with original proof of purchase.

MASK, FIN, SNORKEL, WARRANTY

Zeagle warrants that Zeagle (Masks, Fins, Snorkels, Bags, Accessories, Apparel) purchased from authorized Zeagle dealers shall be free from defects in materials and workmanship under normal sport, skin and scuba diving use with proper maintenance and care for a period of one (1) year from date of original purchase. Under this limited warranty, Zeagle will either repair or replace, at the sole option of Zeagle, any original equipment or parts that fail to perform as intended. When this limited warranty is in force, it will cover the cost of necessary replacement parts. Labor and shipping charges are not included and must be paid by you. You must save the original purchase receipt as proof of purchase. This limited warranty applies only to the original purchaser and is not transferable. Zeagle makes no warranty or representation regarding the performance of any products used in conjunction with Zeagle's products. This Limited warranty applies only to these products sold through authorized Zeagle dealers.

REGULATOR WARRANTY

All of our airways are constructed to the highest standards of durability and performance. Our style of construction is labor intensive and expensive, but it results in a more durable product. This quality of construction makes it possible for us to offer a limited lifetime warranty to the original purchaser. If a defect appears or the airway fails at any time while you own it, we'll repair or replace it free of charge. Our other equipment is guaranteed for either one or two years.

ZEAGLE WARRANTY

1. Your regulator is guaranteed against defects in materials and workmanship. This warranty does not cover normal wear, or damage from accident, abuse, neglect, alterations, improper usage, or failure to follow reasonable care and maintenance as outlined in this manual. Under this limited warranty, Zeagle will either repair or replace, at its sole option, any original equipment or parts that fail to perform as intended. Shipping and Labor charges are not included and must be paid by you. To validate your warranty, you must fill out and return your warranty registration card to Zeagle within 30 days of purchase.
2. This Limited Lifetime Warranty excludes filters, hoses, O-rings, diaphragms and mouthpieces, which are warranted for two years from the regulator's date of purchase. Filling out the card requires printing CLEARLY the serial numbers of both the first and second stages. You can also register your regulator at www.zeagle.com on the internet in the "Registration" section.
3. The first stage serial number is marked on the F8, Onyx II, Envoy II, or Razor first stage between the HP ports. The 50-D first stage is stamped on the top of the turret bolt. The Flathead 7 and LT first stage is etched on the top of the body. The second stage serial number is stamped on the mouthpiece tube. To read this serial number you must fold back the flexible silicone mouthpiece to expose the numbers. Each serial number consists of a prefix letter followed by six numbers. All of the digits of both the first and second stages must be CLEARLY printed on your warranty registration card for your warranty to be activated.
4. For proof of original ownership, you must save the original purchase receipt. It is your record of when and where the regulator was purchased. It also lets you know when your annual service should be performed.
5. To keep the original-owner limited lifetime warranty in effect, you must have your regulator inspected and serviced annually, within 30 days before or after the anniversary of the purchase date. Failure to do so will invalidate your warranty. This servicing must be performed by an authorized Zeagle dealer. Save the receipts from this servicing for your records.
6. This limited warranty applies only to the original purchaser, and then only to certified divers.
7. Sometimes products from other manufacturers are attached to Zeagle equipment. This warranty does not cover those other products or make any claims as to the performance or suitability of those other products.
8. This limited warranty applies only to regulators sold through authorized Zeagle Systems dealers.
9. This warranty gives you specific legal rights. You may also have other rights that may vary from state to state.

INSTRUMENTS WARRANTY

Zeagle warrants that Zeagle Instruments (gauges, consoles) purchased from authorized Zeagle dealers shall be free from defects in materials and workmanship under normal sport, skin and scuba diving use with proper maintenance and care for a period of two (2) years from date of original purchase. Under this limited warranty, Zeagle will either repair or replace, at the sole option of Zeagle, any original equipment or parts that fail to perform as intended. When this limited warranty is in force, it will cover the cost of necessary replacement parts. Labor and shipping charges are not included and must be paid by you. You must save the original purchase receipt as proof of purchase. This limited warranty applies only to the original purchaser and is not transferable. Zeagle makes no warranty or representation regarding the performance of any products used in conjunction with Zeagle's products. This Limited warranty applies only to products sold through authorized Zeagle dealers.

This limited warranty shall be void if the Instruments have been altered, neglected, misused, abused, lost, or changed. The warranty applies only to normal sport, skin, or scuba diving use.

For more information about the Zeagle Warranty, please visit zeagle.com/support/warranty

WHILE SUPPLIES LAST

The following items are not part of the 2025 product assortment and are only available while supplies last. Please refer to your 2024 buyer's guide for more product details and imagery.

PART NUMBER	DESCRIPTION
345-7001	RECON FIN RED COLOR KIT
345-7002	RECON FIN YELLOW COLOR KIT
345-7003	RECON FIN BLUE COLOR KIT



// CONTENTS

BCDs	2
Personal Fit System (PFS)	5
Complete BCD Systems	11
BCD Key Features	31
BCD Size Chart	32
Complete Backplate & Wing Systems	33
Custom Backplate & Wings	35
BCD Parts	38
 SMBs - LOCATION MARKERS	 39
 PONY SYSTEMS	 40
 REGULATORS	 42
Second Stages	42
Octos and Inflators	46
Adapters and Conversion Kits	46
 FINS	 47
MASKS	48
SNORKELS	50
 INSTRUMENTS AND HOSES	 51

// BCDs



BCDs

UNDERSTANDING ZEAGLE BCD'S

PFS

Zeagle understands that the demands of each job—and each dive—are specific to you. That's why Zeagle prides itself on offering the **Personal Fit System (PFS)**, which lets you modify a BCD down to the smallest detail using interchangeable components. Whether you personally have a hard time finding a well-sized BCD, you're seeking specific performance attributes to meet the needs of your profession, or you're excited to add some color to your kit, Zeagle's PFS can meet the custom requirements of your diving.

BA

Tested, Trusted. The Berry Amendment (Title 10, Section 2533a of the U.S Code) requires the Department of Defense to operate with American-made products, and Zeagle is proud to support military, commercial and public safety divers around the world with **Berry Compliant** BCDs that are made on American soil. Our BCDs serve those who serve our country, risk their lives, and dare to go where others don't in pursuit of something bigger. Zeagle's tested and trusted line of BCDs include the Ranger, Ranger LTD, Rescue 911, and SAR to ensure all military and search and rescue personnel comply with the Berry Amendment.



Zeagle has been designing and building professional scuba diving products for over 40 years. Starting in 1979, Zeagle was founded on the fundamentals from the skydiving industry which led to an industry shift in the scuba diving market to both increase diver performance and safety. Often unconventional, Zeagle has been doing things their way since day one. Our gear is purposeful because Zeagle challenges standards in search of tougher tested, more trusted dive gear. **This in-house capability is now available to all Zeagle customers and professional divers through the custom BCD builder.**



Our Jacket BCDs, the Resort+, Bravo, and Marina, do not include our Personal Fit System. However we still design with our elite Zeagle DNA for unwavering quality and durability. **If you're looking for a reliable, traditional design melded with Zeagle's legendary toughness, go with our jacket BCDs.**

BCDs



RANGER LTD
€€



RANGER
€€



STILETTO
€€



ZENA
€€



FURY
€€



SCOUT
€€



RESCUE 911
€€



SAR
€€



EXPRESS TECH DELUXE
€€



RANGER JR
€€



CODE3
€€



CODE 3 W/ ENVOY II RAZOR
€€

BCDs - continued



COVERT XT
€€



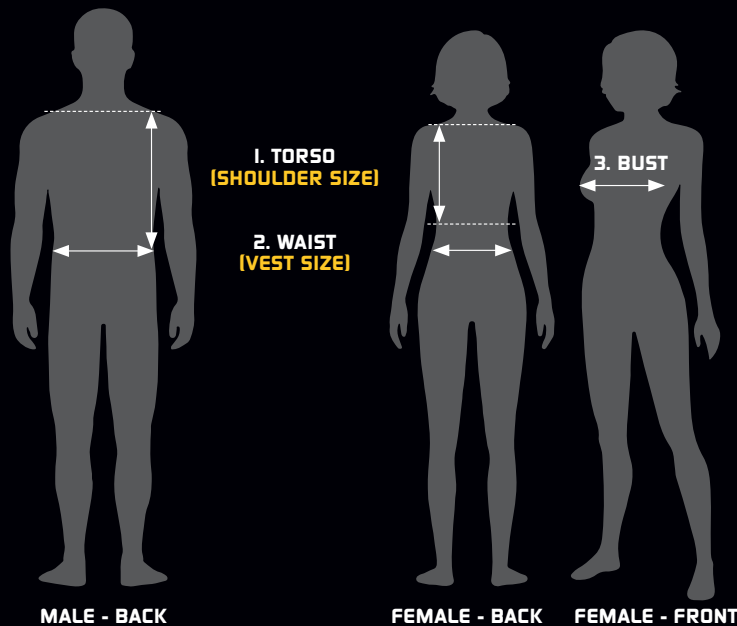
RESORT+
€€

// PERSONAL FIT SYSTEM (PFS)

The Personal Fit System starts with you and your specific measurements. Whether you're 4'10" or 6'10", male or female, slim or built, Zeagle has a bespoke sizing option to fit your needs and equipment preferences.

STEP 1 TAKE YOUR MEASUREMENTS

A true personal fit starts by taking your waist and shoulder measurements independently—this provides a foundation for a custom BCD that's specific to your body. Torso length (shoulder to waist dimension) can vary a great deal, even for individuals of the same height, so if you are either very short or long-waisted in relation to your height or waist size, conventional "generic" sizing may not give you a good fit. Our interchangeable components allow you to fit waist size, torso length, and chest size independently, giving you a personally sized system.



MALE:

1. **TORSO:** Measure the length from the top of the shoulder to the natural waistline on your back. This will determine your shoulder size.
2. **WAIST:** Measure the width at the natural waistline (smallest point of the waist). This will determine your vest size. Measure this on your back.

FEMALE:

1. **TORSO:** Measure the length from the top of the shoulder to the natural waistline on your back. This will determine your shoulder size.
2. **WAIST:** Measure the width at the natural waistline (smallest point of the waist). This will determine your vest size. Measure this on your back.
3. **BUST (Female):** Fit to chest/bust size. This will determine your front panel size. Measure this on the front.

For a complete fit of your Zeagle BCD use the **CUSTOM MEASUREMENT GUIDE** below to find your vest and shoulder size. If your vest size and shoulder size match (ie; both large), then your BCD will be stock size.

CUSTOM MEASUREMENT GUIDE

A. MEASURE YOURSELF

B. PICK YOUR VEST AND SHOULDER SIZE

MEN'S			
TORSO	SHOULDER SIZE	WAIST	VEST SIZE
12 - 16 in 30.5 - 40.6 cm	XS	23 - 29 in 58 - 74 cm	XS
14 - 18 in 35.5 - 46 cm	S	28 - 35 in 71 - 89 cm	S
18 - 22 in 46 - 56 cm	M	33 - 41 in 84 - 104 cm	M
22 - 26 in 56 - 66 cm	L	37 - 45 in 94 - 114 cm	L
26 - 29 in 66 - 74 cm	XL	42 - 50 in 107 - 127 cm	XL
26 in 66 cm	2XL	47 - 55 in 119 - 140 cm	2XL
28 in 71 cm	3XL*	52 - 60 in 132 - 152 cm	3XL*
30 in 76 cm	4XL*	57 - 65 in 145 - 165 cm	4XL*

* indicates a special order size

**Requires exact measurement.

WOMEN'S					
TORSO	SHOULDER SIZE	BUST	FRONT PANEL SIZE	WAIST	VEST SIZE
10 - 13 in 25.4 - 33 cm	XS	26 - 30 in 66 - 76 cm	XS	20 - 24 in 50 - 61 cm	XS
13 - 16 in 33 - 40.6 cm	S	30 - 34 in 76 - 86 cm	S	24 - 30 in 61 - 76 cm	S
15 - 18 in 38 - 46 cm	M	34 - 37 in 86 - 94 cm	M	26 - 34 in 66 - 86 cm	M
17 - 19 in 43 - 48 cm	L	37 - 42 in 94 - 107 cm	L	28 - 38 in 71 - 96.5 cm	L
19 - 21 in 48 - 53 cm	XL*	40 - 44 in 101 - 112 cm	XL*	30 - 38 in 76 - 96.5 cm	XL*
21 - 23 in 53 - 58 cm	2XL*	42 - 46 in 107 - 117 cm	2XL*	32 - 40 in 81 - 101 cm	2XL*
23 - 25 in 58 - 63.5 cm	3XL*	44 - 48 in 112 - 122 cm	3XL*	34 - 42 in 86 - 107 cm	3XL*

* indicates a special order size

// PERSONAL FIT SYSTEM (PFS)

STEP 2 CHOOSE YOUR HARNESS

Decisions can be hard, but when you're starting with vests such as our world-class Ranger, Zena, Ranger LTD and Stiletto, making a choice gets a little easier. Put some meat on the bones by choosing your preferred backplate and harness, then a bladder assembly that meets your requirements.

A VEST ASSEMBLY



The vest assembly is the core of a Zeagle BCD to which all other components are attached. The vest includes the weight system (where applicable), utility pockets and tank bands. Vest size measurement is the circumference taken at the top of the hip. The waist panel/cummerbund is always a single size and is sold separately from the vest section.

7957CR	Ranger vest assembly (XS-XXXL)
7959R	Ranger LTD vest assembly (does not include p/n 8043 weight pouches) (XS-XXXL)
7757CR	911 vest assembly (XS-XL)
7757HR	SAR vest assembly (S-XXL)
7150RS	Stiletto vest assembly (XS-XXXL)
7450R	Zena vest assembly (XS-XL)

B WAIST PANEL (CUMMERBUND)



7169S	Stiletto waist panel
7969N	Ranger waist panel (XS-XL)
7969P-LTD	Ranger LTD waist panel (gray or black) (XS-XL)
7969P	Pre-'09 Ranger LTD waist panel (XS-XL)
7272BK	Panel Extender Packcloth
7969-BASE	Base Cummerbund (XS , SM , M , LG , XL)
7969-RESORT	Resort Cummerbund (XS , SM , MD , LG , XL , XXL)

C SHOULDER SECTION



The shoulder section is an important part of the fit of a Zeagle BCD. The "shoulder" measurement goes from the top of the shoulder down to the top of the hip (the iliac crest). This section adjusts where the weight system and bladder assembly fit on the torso. All shoulder sections come with a sternum strap and the appropriate hose holder with model name.

7968C	Ranger shoulder section (XS , SM , MD , LG , XL , XXL , XXXL)
7962LTD	Ranger LTD shoulder section (XS , SM , MD , LG , XL , XXL , XXXL)
7768-911	911 shoulder section (XS , SM , MD , LG , XL , XXL)
7768-SAR	SAR shoulder section (SM , MD , LG , XL)
810I	HALO shoulder section
7468	Zena shoulder section (XS , SM , MD , LG , XL)
7168S	Stiletto shoulder section (XS , SM , MD , LG , XL , XXL)

// PERSONAL FIT SYSTEM (PFS)

STEP 3 CHOOSE YOUR BLADDER ASSEMBLY

A wide variety of Zeagle bladder systems are available, with capacities for 24 lb (11 kg) of lift to redundant 85 lb (38.5 kg) lift bladders. Bladder assemblies include OPV with pull and corrugated hose with inflator.



BLADDER ASSEMBLY (STILETTO)

- 25 lb (11 kg) **PN: 7033HD-Z**
- 35 lb (16 kg) **PN: 7030HD-Z**
- 44 lb (20 kg) **PN: 7035HD-Z**



RANGER BLADDER ASSEMBLY

- PN: 7718C-Z**
- 44 lb (20 kg) twin



BLADDER ASSEMBLY (RANGER LTD W/ SHOULDER DUMP)

- PN: 7769BK-Z**
- 44 lb (20 kg)
- Includes shoulder dump and zippers sewn into cover



ZENA BLADDER ASSEMBLY

- PN: 7034-Z**
- 34 lb (15 kg)



65LB BLADDER ASSEMBLY (RESCUE 911 & SAR)

- PN: 7722-Z**
- 65 lb (29.5 kg)

Bladder assemblies include OPV's with pull and corrugated hose with inflator.

INNER BLADDERS AND BLADDER COVERS

Zeagle's "double bag" bladder assemblies consist of an outer fabric cover and an inner urethane bladder. The individual Bladder Covers and Inner Bladders can be purchased separately as needed.

0400EFX-Z	44lb lift bladder with extra RT hand dump for Ranger LTD (new style threads)
0400EF-Z	44lb lift capacity inner bladder (Ranger) (new style threads)
0401-Z	Bladder, Inner, Code 3/Rapid Diver (new style threads)
0417U-Z	35 lb Covert XT inner bladder (new style threads) w/ upper OPV
0422EF-Z	65lb lift capacity inner bladder (Tech BC/911) (new style threads)
7030BP-IN	30 lb lift bladder inner bladder (new style threads)
7040BP-IN	40 lb lift bladder inner bladder (new style threads)
7756	Ranger Bladder Cover
7765	SAR/Tech Bladder Cover
7765C	911 Bladder Cover
7769LTD-BK	Ranger LTD Bladder Cover (Black)

// PFS ACCESSORIES

STEP 4 CHOOSE YOUR ACCESSORIES

Your diving needs are specific to your mission, and Zeagle makes it a priority to offer custom accessories to supplement the requisites of your field, profession and preference. Outfit your BCD with utility pouches, knives, tool kits, pony bottle holsters, zip mounts, and more—anything you need to get the job done.

CHOOSE YOUR MOUNT.

NOTE: Ranger LTD comes standard with Zip Mount.



ALL PURPOSE MOUNT



ZIP MOUNT ADAPTER
(ALSO AVAILABLE FOR ZENA)

OPTIONAL POUCHES AND POCKETS



TANK POUCH
20 CU FT TANK



E-Z MOUNT
20 CU FT TANK



SPARE AIR POUCH



PONY BOTTLE
6 CU FT POUCH



LEFT UTILITY
POCKET



RIGHT UTILITY
POCKET

8501RK Fury Ripcord Pocket Assy ([XS-L](#), [L-XXL](#))

[8501QLR](#) Fury QLR Pocket Assy, One Size Only

[8136](#) All Purpose Mount

[8137](#) Zip Mount Adaptor (Ranger, Ranger LTD, Stiletto, Express Tech)

8137Z Zip Mount Adaptor Kit for Zena

[8079](#) Tank Pouch

[8056](#) E-Z Mount QD Pouch, 20 cu ft tank

[8056Z](#) E-Z Mount QD Pouch w/ Zip, 20 cu ft tank

[8077](#) E-Z Mount QD Pouch, 6 cu ft tank

[8077Z](#) E-Z Mount QD Pouch, 6 cu ft tank - zip on

[8066](#) Spare Air Pouch

[8067](#) Pony Bottle Pouch, 6 cu ft pouch

[8068L](#) Left Utility Pocket

[8068R](#) Right Utility Pocket

WEIGHT POUCHES/POCKETS



MESH WEIGHT POUCHES



TRIM WEIGHT POUCH



REAR WEIGHT SYSTEM (9KG)



REAR WEIGHT SYSTEM (7KG)

MESH WEIGHT POUCHES FOR ZEAGLE RIPCORD BCDs - (Now comes standard with Ranger LTD, Ranger, Stiletto and Zena)

- 10, 12, 17.6 lb (4.5, 5.4 or 8 kg) capacity

8050S TRIM WEIGHT POUCHES - SOLD INDIVIDUALLY

- Hook and loop closure
- 6 lb (2.7 kg) capacity

REAR WEIGHT SYSTEM - SOLD AS A PAIR

- Releasable
- 19.8 or 15.4 lb (9 or 7 kg) total capacity

WEIGHT TOTE BAG

- 13 in x 7.9 in x 5 in (33 cm x 20 cm x 12.7 cm)

[8042Z](#) Mesh Pouch - 10 lb (4.5 kg) capacity

[8042](#) Mesh Pouch - 12 lb (5.4 kg) capacity

[8043](#) Mesh Pouch - 18 lb (8 kg) capacity

[8050S](#) Trim Weight Pouch - 6 lb (2.7 kg) capacity

[8051Z](#) Rear Weight System - 20 lb (9 kg) total (red pull tabs)

[8052Z](#) Rear Weight System - 16 lb (7 kg) total (red pull tabs)

// PFS ACCESSORIES

STEP 4 [CONT.]

POCKETS



SPORT POCKET



QUICK POCKET



COVERT XT
POCKET



ZENA UTILITY



SPARE AIR
POCKET



TECH UTILITY



CLIP POCKET

TECH UTILITY POCKET

5.9 in x 9.1 in x 2.5 in
(15 cm x 23 cm x 6.3 cm)

- 2 zippered compartments
- Ballistic Nylon

ZENA UTILITY POCKET

5.9 in x 9.1 in x 2.5 in
(15 cm x 23 cm x 6.3 cm)

- 1 zippered compartment
- Cordura® Nylon
- Available in Black, Neon Yellow

CLIP POCKET

- Mounts on Zeagle BCD waist panel
- Clip closure
- Cordura® Nylon

SPORT POCKET

5.9 in x 9.1 in x 2.5 in
(15 cm x 23 cm x 6.3 cm)

- 1 zippered compartment
- Para-pac Nylon
- Available in Black, Blue

QUICK POCKET

- Mounts on any Zeagle BCD
- Expandable mesh
- Ballistic Nylon

SPARE AIR POCKET

- Mounts on any Zeagle BCD
- Ballistic Nylon
- Quick release

8033	Tech Utility Pocket
8033C	Zena Utility Pocket
8033CC	Clip Pocket
8033P	Sport Pocket (Blue , Black)
8033QP	Quick Pocket
8055L	Spare Air Pocket
7102-PKT	Covert XT Accessory Pocket

DIVING WITH TWIN TANKS?

The following items are recommended if you are starting to dive with dual tanks. Compatible with the Ranger LTD, Ranger, SAR or 911 BCDs



TWIN BANDS



MOUNTING
PLATES

BOLT KITS (NOT SHOWN)

- 0.2 in (0.6 cm) Bolt and nut kit, contains 8 sets (for single cylinder mount)
- 5.5 in (14 cm) Bolts (for 7in/18cm tank)
- 6.5 in (16.5 cm) Bolts (for 7.9in/20cm tank)

MOUNTING PLATES TWIN CYLINDER/PAIR

- Provides reinforcement on a Zeagle BCD vest when attaching twin cylinders to twin-capable Zeagle BCDs

TWIN BANDS TWIN CYLINDER

- 7.25 in (18 cm) Tank
- 8 in (20 cm) Tank

BLADDER ATTACHMENT STRAPS FOR DOUBLES (NOT SHOWN)

- Required to mount twin cylinders on applicable Zeagle BCDs. Sold separately.

519-BKBA	Bolt Kit - 0.2 in (0.6 cm) Bolt and Nut (single cylinder)
519-BK55	Bolt Kit - 5.5 in (14 cm) Bolts (twin cylinder)
519-BK65	Bolt Kit - 6.5 in (16.5 cm) Bolts (twin cylinder)
519-TCMP	Mounting Plates (twin cylinder/pair)
519-TB07	Twin Bands- 7.25 in (18 cm) Tank (twin cylinder)
519-TB08	Twin Bands- 8 in (20 cm) Tank (twin cylinder)
7281	Bladder Attachment Straps
7281S	Bladder Attachment Strap - Small
7281M	Bladder Attachment Strap - Medium
7281L	Bladder Attachment Strap - Large

519-SC01	Single Cylinder Mount
--------------------------	-----------------------

// PFS ACCESSORIES

STEP 4 [CONT.]

DIVER TOOLS, MOUNTS, STRAPS AND PADS



DIVE KNIFE WITH SHEATH



LINE CUTTER WITH SHEATH



EMT SHEARS W/ SHEATH



DIVER TOOL KIT



DIVER TOOL KIT WITH SLATE



QUICK LINK WITH STRAP



PONY BOTTLE BAND KIT



FULL LUMBAR PAD

LINE CUTTER WITH SHEATH

- Mounts easily on any BCD

EMT SHEARS WITH SHEATH

- Stainless Steel

DIVER TOOL KIT

- Includes: Sheath, knife, rescue scissors

DIVER TOOL KIT WITH SLATE

- Includes: Sheath, knife, rescue scissors, slate

SPLIT SADDLE STRAP ASSEMBLY FOR USE WITH RANGER AND TECH BCDS (NOT SHOWN)

- Additional security for heavy-duty BCDs

QUICK LINK WITH STRAP

- A flexible and versatile way to attach a Pony bottle and many other accessories to any Zeagle BCD

PONY BOTTLE BAND KIT

- Twin straps. Heavy-duty buckle.
- Mounts Pony or battery pack on any Zeagle BCD

GRIMLOCK (NOT SHOWN)

- Military MOLLE strap accessory plastic opening 2 in x 1.5 in (5 cm x 3.8 cm) D-ring
- Available in Black, Gray or Tan

5402	Dive Knife with Sheath
5403	Line Cutter with Sheath
8134	EMT Shears w/ Sheath
8135	Diver Tool Kit
8135S	Diver Tool Kit w/ Slate
8011	Quick Link w/ Strap
8029HD	Pony Bottle Band Kit
7275F	Lumbar Pad for Ranger, Ranger LTD, Stiletto
7275Z-9	Lumbar Pad for Zena
7024C	Split Saddle Strap Assembly
8026Z-COVERT	Hose Holder Covert
8026Z-EXPRESS	Hose Holder Express Tech
8026Z-RANGER	Hose Holder Ranger
8026Z-LTD	Hose Holder LTD
8026Z-SAR	Hose Holder SAR
8026Z-SCOUT	Hose Holder Scout
8026Z-STILLETTO	Hose Holder Stiletto
8026Z-ZENA	Hose Holder Zena
7024B	Saddle Strap Buckle Assembly
110-4100	Grimlock

//RANGER LTD^{CE} **PFS**

EXTRA FEATURES THAT RAISE THE BAR

The Ranger LTD has everything its sibling the Ranger has, but with shoulders that accommodate more accessories and a super-duty Airlloc buckle that swivels to adjust the harness to the body's contour, eliminating binding and restriction of movement at the chest and underarm areas. With additional harness-type webbing and a new threading arrangement, divers can easily add more D-rings and other accessories conveniently on the shoulder. These features allow the accessory-minded diver to further set up their BCD for all types of diving.

- Heavily reinforced 1680 Denier Ballistic Nylon construction
- Zip-mount accessory zippers on each side of bladder
- Unique tuck-away mesh pouch on front of cummerbund
- Extra lumbar padding
- 4 stainless steel angled D-rings on shoulders (2 adjustable), and 4 on vest
- 11 in (28 cm) spaced grommets for adding twin cylinders*
- Includes a pair of 17.6 lb (8 kg) capacity mesh weight pouches

* Also requires bladder attachment straps. # 7281M

Ripcord	Yes
Inflation	Rear Inflate
Dry Weight	9.5 lb (4.31 kg)
Lift Capacity	44 lb (19.96 kg)
Weight Capacity	36 lb (16.31 kg)
Rear Weight System	20 lb (9.07 kg)
D-Rings	8 Stainless Steel
Custom Colors	Yes
Custom Sizes	XXL / XXXL / XXXXL
Single or Twin Tank Capability	Twin



Berry Amendment version available using tested, trusted military grade materials.



Available to customize sizing and colors using our Custom BCD Builder on our website



See all bladder options on Step 3 of PFS Customization



Available accessories on Step 4 of PFS Customization

7909RK RANGER LTD w/inflator hose

COLOR Black

SIZE XS / [S](#) / [M](#) / [L](#) / [XL](#) / [XXL](#)

CUSTOM XXXL / XXXXL

// RANGER LTD CUSTOM COLOR OPTIONS

At Zeagle, we cut and sew BCDs in our own factory in Salt Lake City, Utah, so we can custom make yours to order. If the level of customization found through our Personal Fit System isn't enough, you can also determine the aesthetic of your BCD through color paneling. With seven different panel options and 13 different colorways—including desert camo—Zeagle provides nearly endless options for you to make your BCD unique.



*Aqua and Deep Blue shown above

CHOOSE WHICH PARTS TO CUSTOMIZE:

The following options are available to be selected and customized with our variety of colors. These can be mixed and matched any way you desire.

1. Shoulder
2. Bladder (Front)
3. Bladder (Gusset)
4. Bladder Rear (See inset image)
5. Pocket
6. Vest
7. Cumberbund

CHOOSE YOUR COLOR(S):

The following colors are available to be customized in any combination with the locations provided on the left. Visit Zeagle.com to mix and match different combinations.

GRAPE	HOT PINK	SLATE GREY
NEON YELLOW	OLIVE GREEN	RED
ROYAL BLUE	ORANGE	WICKED GREY
DESERT CAMO	AQUA	DEEP BLUE
COYOTE TAN		

**Colors may not be exactly as shown.

//RANGER^{CE}

THE ORIGIN OF TOUGH



Ranger is both rugged and versatile. Reinforced with 1680 Denier Ballistic Nylon, it comes standard with backplate grommets, a 44 lb (20 kg) lift capacity bladder, a 35 lb (16 kg) capacity Ripcord Weight System® (pull-out weight system available) and a 15.4 lb (7 kg) capacity rear mount trim weight system. It can transition between tropical travel diving, rugged cold-water diving in wet or dry suits, single or twin cylinders, or tech diving. The Ranger is compatible with a variety of options and accessories, including bladders, pockets, hard backplates, and custom gear attachment components.

- The patented Personal Fit System (PFS) allows for changing out sections of the BCD
- Heavily reinforced 1680 Denier Ballistic Nylon construction
- Two zippered utility pockets
- Adjustable and depth compensation cummerbund
- 4 stainless steel angled D-rings on shoulders (2 adjustable), and 2 on vest
- Adjustable sternum strap
- 11 in (28 cm) spaced grommets for adding twin cylinders*

* Also requires bladder attachment straps. # 7281M

Ripcord	Yes
Inflation	Rear Inflate
Dry Weight	8.4 lb (3.8 kg)
Lift Capacity	44 lb (19.95 kg)
Weight Capacity	36 lb (16.3 kg)
Rear Weight System	16 lb (17.25 kg)
D-Rings	6 Stainless Steel
Custom Colors	Yes
Custom Sizes	Yes
Single or Twin Tank Capability	Twin



See all bladder options on Step 3 of PFS Customization



Available accessories on Step 4 of PFS Customization



Berry Amendment version available using tested, trusted military grade materials.



Available to customize sizing and colors using our Custom BCD Builder on our website

7907RK RANGER w/inflator hose

COLOR Black

SIZE [XS](#) / [S](#) / [M](#) / [L](#) / [XL](#) / [XXL](#)

CUSTOM XXXL / XXXXL

// RANGER CUSTOM COLOR OPTIONS

At Zeagle, we cut and sew BCDs in our own factory in Salt Lake City, Utah, so we can custom make yours to order. If the level of customization found through our Personal Fit System isn't enough, you can also determine the aesthetic of your BCD through color paneling. With seven different panel options and 13 different colorways—including desert camo—Zeagle provides nearly endless options for you to make your BCD unique.



*Desert Camo shown above

CHOOSE WHICH PARTS TO CUSTOMIZE:

The following options are available to be selected and customized with our variety of colors. These can be mixed and matched any way you desire.

1. Shoulder
2. Bladder (Front)
3. Bladder (Gusset)
4. Bladder Rear (See inset image)
5. Pocket
6. Vest
7. Cummerbund

CHOOSE YOUR COLOR(S):

The following colors are available to be customized in any combination with the locations provided on the left. Visit Zeagle.com to mix and match different combinations.

GRAPE	HOT PINK	SLATE GREY
NEON YELLOW	OLIVE GREEN	RED
ROYAL BLUE	ORANGE	WICKED GREY
DESERT CAMO	AQUA	DEEP BLUE
COYOTE TAN		

**Colors may not be exactly as shown.



FULLY LOADED FOR LOCAL AND TRAVEL DIVING

Stiletto has a 24 lb (11 kg) capacity Ripcord Weight System®, a 16 lb (7.3 kg) capacity rear mount trim weight system, and is reinforced with 1000 Denier Nylon construction. It comes standard with a 35 lb (15.9 kg) low profile, heavyweight bladder with elastic retractor, and features two zippered utility pockets capable of handling all your accessories for both local and travel diving.

- The patented Personal Fit System (PFS) allows for changing out sections of the BCD
- Reinforced 1000 Denier Nylon construction
- Sewn-on lumbar pad
- Two zippered utility pockets
- Adjustable and depth compensation cummerbund
- Adjustable sternum strap

Ripcord	Yes
Inflation	Rear Inflate
Dry Weight	7.4 lb (3.4 kg)
Lift Capacity	35 lb (15.9 kg)
Weight Capacity	24 lb (11 kg)
Rear Weight System	16 lb (7.3 kg)
D-Rings	5 Stainless Steel
Travel Friendly	Yes
Custom Colors	Yes
Single or Twin Tank Capability	Single
Custom Sizes	XXXL / XXXXL



See all bladder options on Step 3 of PFS Customization



Available accessories on Step 4 of PFS Customization



Berry Amendment version available using tested, trusted military grade materials.



Available to customize sizing and colors using our Custom BCD Builder on our website

7104RK STILETTO w/inflator hose

COLOR Black

SIZE [XS](#) / [S](#) / [M](#) / [L](#) / [XL](#) / [XXL](#)

CUSTOM [XXXL](#) / [XXXXL](#)

// STILETTO CUSTOM COLOR OPTIONS

At Zeagle, we cut and sew BCDs in our own factory in Salt Lake City, Utah, so we can custom make yours to order. If the level of customization found through our Personal Fit System isn't enough, you can also determine the aesthetic of your BCD through color paneling. With four different panel options and 13 different colorways—including desert camo—Zeagle provides nearly endless options for you to make your BCD unique.



*Aqua and Royal Blue shown above

CHOOSE WHICH PARTS TO CUSTOMIZE:

The following options are available to be selected and customized with our variety of colors. These can be mixed and matched any way you desire.

1. Shoulder
2. Pocket
3. Vest
4. Cumberbund

CHOOSE YOUR COLOR(S):

The following colors are available to be customized in any combination with the locations provided on the left. Visit Zeagle.com to mix and match different combinations.

GRAPE	HOT PINK	SLATE GREY
NEON YELLOW	OLIVE GREEN	RED
ROYAL BLUE	ORANGE	WICKED GREY
DESERT CAMO	AQUA	DEEP BLUE
COYOTE TAN		

**Colors may not be exactly as shown.



OUTSTANDING FIT AND COMFORT FOR WOMEN

Designed for women, the Zena's twin waist and hip band system provide a way to securely position weight below waist level around the body's center of buoyancy. As the twin straps adjust to waist and hips independently, they provide outstanding fit and comfort. The Zena closes in the front with a heavy-duty zipper for a snug and secure, yet non-restrictive fit.

- Elastic front panels with zipper closure for a comfortable, secure fit and a streamlined profile
- Dual waistbands allow weights to be positioned below waist level for superior comfort and balance
- Quick release buckles on shoulders and body
- Expandable pocket at waist. 8033QP included.
- Component sizing fits waist, torso length and chest size independently

Ripcord	Yes
Inflation	Rear Inflate
Dry Weight	6.2 lb (2.81 kg)
Lift Capacity	34 lb (15.42 kg)
Weight Capacity	24 lb (10.89 kg)
Rear Weight System	16 lb (7.26 kg)
D-Rings	4 Stainless Steel
Travel Friendly	Yes
Custom Colors	No
Single or Twin Tank Capability	Single
Custom Sizes	XL / XXL



See all bladder options on Step 3 of PFS Customization



Available accessories on Step 4 of PFS Customization



Berry Amendment version available using tested, trusted military grade materials.



Available to customize sizing and colors using our Custom BCD Builder on our website

7401RK ZENA w/inflator hose

7467Z Floral or Standard panel

SIZE [XS](#) / [S](#) / [M](#) / [L](#)

CUSTOM [XL](#) / [XXL](#)

// ZENA STANDARD COLOR OPTIONS

Customize this BCD with interchangeable front color panels, including embroidered (floral) and standard colors. Floral panels are available as stock items, all other color panels are available by custom order only.



AQUA



**AQUA
FLORAL**



BLACK



BLUE



**BLUE
FLORAL**



NEON PINK



**PINK
FLORAL**

ZENA FRONT PANEL COLORS - 7467Z

AQ	Aqua
----	------

AB	Aqua Blue Floral
----	------------------

BK	Black
----	-------

BU	Blue
----	------

GB	Blue Floral
----	-------------

NP	Neon Pink
----	-----------

MP	Pink Floral
----	-------------

**Colors may not be exactly as shown.

// ZENA CUSTOM COLOR OPTIONS

At Zeagle, we cut and sew BCDs in our own factory in Salt Lake City, Utah, so we can custom make yours to order. If the level of customization found through our Personal Fit System isn't enough, you can also determine the aesthetic of your BCD through color paneling. With four different panel options and 18 different colorways—including desert camo—Zeagle provides nearly endless options for you to make your BCD unique.

CHOOSE WHICH PARTS TO CUSTOMIZE:

The following options are available to be selected and customized with our variety of colors. These can be mixed and matched any way you desire.

1. Shoulder
2. Pocket
3. Vest (Not shown)
4. Front

CHOOSE YOUR COLOR(S):

The following colors are available to be customized in any combination with the locations provided on the left. Visit Zeagle.com to mix and match different combinations.

GRAPE	HOT PINK	SLATE GREY
NEON YELLOW	OLIVE GREEN	RED
ROYAL BLUE	ORANGE	WICKED GREY
DESERT CAMO	AQUA	DEEP BLUE
COYOTE TAN		

*ZENA FLORAL PATTERNS (FRONT ONLY):

The following options are only for the Front panel of the Zena BCD. These would be permanently sewn onto the BCD. Can't decide? You can purchase interchangeable panels for the Zena BCD.



**Pink Floral Front and Hot Pink shown above

***Colors may not be exactly as shown.



EXTREME ADJUSTABILITY

Taking adjustability to the next level, the Fury BCD builds on our Personal Fit System (PFS) to provide the absolute best fit on the market. The result is a custom-tailored, custom-fitting BCD that's unparalleled in bespoke utility.

Top features of the BCD - built-in adjustability for improving overall fit and modularity/interchangability of the weight system (QLR & Ripcord) which will allow divers to use a conventional click and pull weight release system (QLR) or the traditional Zeagle patented Ripcord weight release system.

- A hyper-adjustable BCD for any dive mission
- Reinforced 1000 denier Ballistic nylon construction
- PFS modular sizing delivers total adjustability
- Fully adjustable shoulders, vest and cummerbund
- QLR and Ripcord weight systems available
- Four stainless steel angled D-rings on shoulders (two adjustable)
- Two stainless steel D-rings on vest
- Two zippered utility pockets at sides
- Adjustable sternum strap for tightening kit

Ripcord	Ripcord or QLR (Quick Lock Release)
Inflation	Rear Inflate
Dry Weight	Reg Model w/ Ripcord 7.25 lb (3.32 kg) Reg Model w/ QLR 8.35 lb (3.78 kg) Lrg Model w/ Ripcord 7.7 lb (3.5 kg) Lrg Model w/ QLR 8.7 lb (3.94 kg)
Lift Capacity	Reg Model 26 lb (11.8 kg) Lrg Model 35 lb (15.9 kg)
Weight Capacity	Ripcord 24 lb (10.9 kg) QLR 20 lb (9 kg)
Rear Weight System	16 lb (7.3 kg)
D-Rings	4 Black Stainless D Rings
Travel Friendly	Yes
Custom Colors	No
Custom Sizes	No
Single or Twin Tank Capability	Single



Available accessories on Step 4 of PFS Customization



8500RK FURY RC w/inflator, hose and RE Valve

8500QLR FURY QLR w/inflator, hose and RE Valve

COLOR Black

SIZE Ripcord - [Regular](#) (XS-L) / [Large](#) (L-XXL)

QLR - [Regular](#) (XS-L) / [Large](#) (L-XXL)

//SCOUT^{CE}

THE IDEAL LOW COST AND LIGHTWEIGHT ENTRY-LEVEL BCD

Mixing exceptional value for price with Zeagle's legendary quality, the Scout BCD delivers sturdy, lightweight performance on every dive. With a low-profile single bladder, an elastic retractor, and an elastic waist closure, the Scout is built with a minimalist aesthetic in mind.

Our lightest and most compact BCD, it is ideal for a basic travel system with minimum weight and bulk. If you're just starting out and recently got your Open Water certification, the Scout is a great choice.

- Reinforced nylon construction
- Two zippered utility pockets
- Adjustable elastic waist panels
- Adjustable sternum strap



Ripcord	No
Inflation	Rear Inflate
Dry Weight	6.7 lb (3 kg)
Lift Capacity	24 lb (10.9 kg)
Weight Capacity	None
Rear Weight System	16 lb (7.3 kg)
D-Rings	4 Stainless Steel
Custom Colors	No
Custom Sizes	No
Single or Twin Tank Capability	Single



See all bladder options on Step 3 of PFS Customization



Available accessories on Step 4 of PFS Customization

7108VK SCOUT w/inflator hose & RE Valve

COLOR Black

SIZE [XS](#) / [S](#) / [M](#) / [L](#) / [XL](#)

//RESCUE 911^{CE}

APPROVED FOR PUBLIC SAFETY DIVERS

With a twin buckle front closure, Rescue 911 is based on the Tech BCD platform, but with additional features. SOLAS standard symbols on buckles, reflective trim on the bladder, additional D-rings, pockets for long octopus hose storage on each bladder wing, and an included split saddle harness. The Rescue 911 has proven to be a durable and flexible platform by a large number of public safety agencies.

- 1680 Denier Ballistic Nylon
- SOLAS reflective symbols on buckles
- Reflective 3M™ ScotchLite™ trim on bladder
- Two hose storage pockets on bladder
- Articulated shoulder assembly using Airloc buckles will swivel to adjust the harness to the body's contour
- 11 in (28 cm) spaced grommets for mounting twin cylinders
- Two double pull waist buckles in front
- Adjustable sternum strap
- Four D-rings on shoulders, two adjustable
- Two zippered utility pockets
- Full lumbar pad
- Split saddle harness



Berry Amendment version available using tested, trusted military grade materials.

Ripcord	Yes
Inflation	Rear Inflate
Dry Weight	9.5 lb (4.3 kg)
Lift Capacity	65 lb (29.5 kg)
Weight Capacity	35 lb (15.9 kg)
Rear Weight System	20 lb (9.1 kg)
D-Rings	6 Stainless Steel
Custom Colors	Yes
Custom Sizes	Yes
Single or Twin Tank Capability	Single



See all bladder options on Step 3 of PFS Customization



Available accessories on Step 4 of PFS Customization

7607RK 911 w/inflator hose & RE valve

COLOR Black

SIZE [XS](#) / [S](#) / [M](#) / [L](#) / [XL](#) / [XXL](#)



APPROVED FOR PUBLIC SAFETY DIVERS

A reliable BCD for search and rescue divers for 20 years, SAR is designed to fit the needs of Public Safety divers. It is similar to the Rescue 911, with the addition of a permanently installed lifting harness for helicopter, cliff, or swift water work. It comes with SOLAS standard symbols on buckles, reflective trim on the bladder, additional D-rings and pockets for long octopus hose storage on each bladder wing. The SAR has been proven to be a durable and flexible platform by public safety and military agencies in the US and abroad.

- 1680 Denier Ballistic Nylon
- SOLAS reflective symbols on buckles
- Reflective 3M™ ScotchLite™ trim on bladder
- Two hose storage pockets on bladder
- Lift capacity of harness, 4,000 lb (1,814 kg)
- Articulated shoulder assembly using Airloc buckles will swivel to adjust the harness to the body's contour
- 11 in (28 cm) spaced grommets for mounting twin cylinders
- Two double pull waist buckles in front
- Adjustable sternum strap
- Two zippered utility pockets
- Small lumbar pad
- Integral lifting harness

Ripcord	Yes
Inflation	Rear Inflate
Dry Weight	12 lb (5.4 kg)
Lift Capacity	65 lb (29.5 kg)
Weight Capacity	36 lb (16.3 kg)
Rear Weight System	20 lb (9.1 kg)
D-Rings	6 Stainless Steel
Custom Colors	Yes
Custom Sizes	XXL
Single or Twin Tank Capability	Twin



See all bladder options on Step 3 of PFS Customization



Available accessories on Step 4 of PFS Customization



Berry Amendment version available using tested, trusted military grade materials.

7807RK SAR w/inflator hose & RE valve

COLOR Black

SIZE XS / S / M / L / XL

CUSTOM XXL

//EXPRESS TECH DELUXE^{CE}

ULTRA LIGHTWEIGHT AND CUSTOMIZABLE

The deluxe version of the Express Tech includes several accessories that are commonly requested by divers. Its deluxe webbing harness includes an articulated shoulder assembly that swivels to adjust the harness to the contours of the torso. Our pad kit can also be included to provide a set of shoulder pads and a removeable soft backpad.

The Express Tech Deluxe is a customizable, ultra-lightweight, super compact BCD packed with features never before found in a rig this small from Zeagle.

- Soft backplate reinforced with a polymer material gives the support needed while retaining flexibility for comfort
- 24.2 lb (11 kg) lift capacity bladder standard. Accepts most bladder assemblies that would fit on a metal backplate.
- 11 in (28 cm) spaced grommets allow for twin cylinder attachment
- Optional Pad Kit (7299) available to increase comfort in the shoulders and back
- Includes an articulated shoulder assembly which will swivel to adjust the harness to the body's contour
- Airloc buckles are used on the shoulder section and waistband
- Accepts Zip Touch Weight System as well as the Ripcord Weight System



Ripcord	Yes
Inflation	Rear Inflate
Dry Weight	6.5 lb (2.95 kg)
Lift Capacity	24 lb (10.89 kg)
Weight Capacity	24 lb (10.89 kg)
Rear Weight System	None
D-Rings	5 Stainless Steel
Travel Friendly	Yes
Custom Colors	Yes
Custom Sizes	Yes
Single or Twin Tank Capability	Single



See all bladder options on Step 3 of PFS Customization



Available accessories on Step 4 of PFS Customization AND on next page

[7709NK-DLX](#)

Express Tech Deluxe w/inflator and hose

[7709WK-DLX](#)

EXPRESS TECH w/inflator hose also includes the Express Tech Pad Kit (7299) and the Zip Touch Weight (519-WS120)

COLOR

Black

SIZE

One Size



2.5CM CROTCH
STRAP



5CM CROTCH
STRAP

EXPRESS TECH ACCESSORIES

These accessories are exclusive for the Express Tech BCD.



EXPRESS TECH BLADDER ASSEMBLY

PN: 7039HD-Z

- [24 lb \(11 kg\)](#)



EXPRESS TECH PAD KIT

PN: 7299

- Backpad and shoulder pads for added comfort at the back and shoulders

[519-PAD01](#)

Soft Pad for Backplate (stainless steel or black anodized aluminum)

[7299](#)

Express Tech Pad Kit

[519-CS01](#)

Crotch Strap- 1 in (2.5 cm) wide

[519-CS09](#)

Crotch Strap- 2 in (5 cm) wide



DESIGNED FOR RAPID EMERGENCY RESPONSE

Code 3 is the next generation of BCDs for all military, coast guard, law enforcement, maritime security, marine patrol and fire and rescue personnel. It's a convenient diving system that's designed specifically for rapid response to an emergency. Featuring an enhanced MOLLE strap system with additional strap areas for accessories, dual tank mounting bands that secure the tank horizontally or vertically, and large reinforced padding adds comfort. Reflective tape increases visibility and makes the diver easily identifiable.

- Two tank configurations (horizontal front and vertical back mount)
- 20 cu ft (0.6 cu m) tank
- 5000psi (345 BAR) gauge with MiFlex hose
- Additional MOLLE strap areas for accessories
- Reflective tape for easy identifying in all environments
- Durable 1680D ballistic nylon
- Two OPV pull dumps
- Adjustable waist and crotch strap
- Razor regulator system



Ripcord	Yes
Inflation	Rear Inflate
Dry Weight	6.5 lb (2.95 kg)
Lift Capacity	24 lb (10.89 kg)
Weight Capacity	24 lb (10.89 kg)
Rear Weight System	None
D-Rings	5 Stainless Steel
Travel Friendly	Yes
Custom Colors	No
Custom Sizes	No
Single or Twin Tank Capability	Single



Available accessories on Step 4 of PFS Customization



Berry Amendment version available using tested, trusted military grade materials.

[720-2017](#) Code 3 w/inflator hose and RE

SIZE One Size

//CODE 3 W/ ENVOY II RAZOR^{CE}

DESIGNED FOR RAPID EMERGENCY RESPONSE

Code 3 is the next generation of BCDs for all military, coast guard, law enforcement, maritime security, marine patrol and fire and rescue personnel. It's a convenient diving system that's designed specifically for rapid response to an emergency. Featuring an enhanced MOLLE strap system with additional strap areas for accessories, dual tank mounting bands that secure the tank horizontally or vertically, and large reinforced padding adds comfort. Reflective tape increases visibility and makes the diver easily identifiable.

- Two tank configurations (horizontal front and vertical back mount)
- 20 cu ft (0.6 cu m) tank
- 5000psi (345 BAR) gauge with MiFlex hose
- Additional MOLLE strap areas for accessories
- Reflective tape for easy identifying in all environments
- Durable 1680D ballistic nylon
- Two OPV pull dumps
- Adjustable waist and crotch strap
- Razor regulator system

The Envoy II Razor is an incredible value, meeting or exceeding the performance of regulators that cost much more. Envoy II is an economical regulator that doesn't compromise on performance or reliability. Its lightweight first stage is available in DIN or Yoke, and its 2nd stage has a downstream valve and Dive/Pre-dive Venturi control (with 30" hose length). Light and comfortable, the Envoy II Second Stage is compact enough to use as a backup but robust enough to rely on as your primary go-to regulator.

Dry Weight	2.4 lb (1.1 kg)
HP/LP	2/5 Ports
Environmentally Sealed	No
Braided Hose	No
Service Interval	1 Year



Available accessories on Step 4 of PFS Customization



RAZOR II



Berry Amendment version available using tested, trusted military grade materials.

710-2017 Code 3 w/Razor II Envoy Regulator, Sanded/Black Tank; Single Gauge (5000 psi) with Miflex Hose

SIZE One Size

//RANGER JR^{CE}

HIGHEST QUALITY BCD FOR KIDS

The Ranger Jr is made with the same rugged construction as the legendary Ranger BCD. It utilizes Zeagle's Personal Fit System® to allow for changing out shoulder and vest sections of the BCD so it can grow as your child does. Ranger Jr. is a great first BCD for young divers.

- Heavily reinforced 1680 Denier Ballistic Nylon construction
- 24.2 lb (11 kg) lift capacity ballistic bladder
- Personal Fit System (PFS) allows for changing out sections of the BCD for a growing child
- Adjustable elastic waist panels
- Adjustable sternum strap

Ripcord	Yes
Inflation	Rear Inflate
Dry Weight	5.6 lb (2.5 kg)
Lift Capacity	24 lb (10.9 kg)
Weight Capacity	16 lb (7.3 kg)
Rear Weight System	16 lb (7.3 kg)
D-Rings	4 Stainless
Custom Colors	No
Custom Sizes	No
Single or Twin Tank Capability	Single



See all bladder options on Step 3 of PFS Customization



Available accessories on Step 4 of PFS Customization

[7905RK](#) RANGER JR w/inflator hose

COLOR Black

SIZE XS

// COVERT XT ^{CE}

TRAVEL-STYLE BCD

The Covert XT is a travel-style BCD that ensures traveling doesn't mean compromising quality. Its MOLLE system with additional accessory attachment points increases versatility over the previous version. Covert XT blends functionality, convenience and comfort with a redesigned front vest, 1000D nylon with durable elastic material, additional padded shoulders, larger weight pockets, and a redesigned weight release system. At 4.4 lb (2 kg) with inflator, it's the ultimate travel upgrade.

- Larger weight pockets and redesigned weight release
- Added tank positioning strap
- Integrated rubber row webbing on tank band strap secures tank
- Increased tank band webbing width secures tank
- Accessories sold separately to be used with MOLLE system, including small pocket for spare mask.
- Weight pouches included
- Additional padding using open cell foam on shoulder and lumbar
- Knife mounting points on both sides
- 1000D nylon with special durable elastic material
- Sizes XS-L (11.79 kg lift)
- Size XL (15.88 kg lift)

Ripcord	No
Inflation	Rear Inflate
Dry Weight	5 lb (2.27 kg)
Lift Capacity	26 - 35 lb (11.79 - 15.88 kg)
Weight Capacity	16 lb (7.3 kg)
D-Rings	4 Plastic
Travel Friendly	Yes



7102CV COVERT XT w/inflator hose

7102CVO COVERT XT w/Octo-Z II

COLOR Black/Gray

SIZE [XS](#) / [S](#) / [M](#) / [L](#) / [XL](#)

//RESORT+ ^{CE}

MINIMALIST AND HARDWEARING JACKET-STYLE BCD

The Resort provides simple weight-integrated buoyancy in a comfortable BCD. This minimalist design provides plenty of D-rings, pockets and attachment points to keep the diver streamlined. Its adjustments, soft backpad, and durable materials make this jacket-style BCD perfect for men and women who want to simply stay focused on their dive.

- Reinforced and fade resistant Cordura® 500 Denier Nylon bladder material, 1000 Denier Nylon on shoulder straps, harness and pocket material
- Unisex front adjustable jacket-style BCD
- Dual position adjustable sternum strap
- Two expandable zippered utility pockets
- Extra soft backpad
- Single action weight release system
- Webbed cummerbund with dual adjustment

Ripcord	No
Inflation	Jacket Style
Dry Weight	7.3 lb (3.3 kg)
Lift Capacity	35 lb (15.9 kg)
Weight Capacity	20 lb (9.1 kg)
Rear Weight System	10 lb (4.5 kg)
D-Rings	6 Stainless Steel
Custom Colors	No
Custom Sizes	No



8202 RESORT w/inflator hose & RE valve

COLOR Black/Red

SIZE [XS](#) / [S](#) / [M](#) / [L](#) / [XL](#)

8202-PLUS [XXL](#)

[8020-RFE](#) Sport Weight Pockets S-M

[8021-RFE](#) Sport Weight Pockets L-XL

// BCD KEY FEATURES

BCD	GENDER	STYLE	PFS	COLOR OPTIONS	CUSTOM COLORS	SIZES	CUSTOM SIZES	DRY WEIGHT	LIFT CAPACITY	WEIGHT CAPACITY	REAR MOUNT/ TRIM WEIGHT SYSTEM	D-RING
RANGER LTD	Unisex	Rear Inflate	Yes	Black	Yes	XS-XL	Yes	9.5 lb (4.3 kg)	44.1 lb (20 kg)	35.3 lb (16 kg) Ripcord	19.8 lb (9 kg)	8 SS
RANGER	Unisex	Rear Inflate	Yes	Black	Yes	XS-XL	Yes	8.4 lb (3.8 kg)	44.1 lb (20 kg)	35.3 lb (16 kg) Ripcord	15.4 lb (7 kg)	6 SS
STILETTO	Unisex	Rear Inflate	Yes	Black	Yes	XS-XL	Yes	7.3 lb (3.3 kg)	35 lb (15.8 kg)	24.5 lb (11 kg) Ripcord	15.4 lb (7 kg)	5 SS
ZENA	Women's	Rear Inflate	Yes	Interchangeable	Yes	XS-L	Yes	6.2 lb (2.8 kg)	34 lb (15.4 kg)	24.5 lb (11 kg) Ripcord	15.4 lb (7 kg)	4 SS
FURY	Unisex	Rear Inflate	Yes	Black	No	XS-XL	Yes	8.7 lb (3.9 kg)	35 lb (15.8 kg)	24.5 lb (11 kg) Ripcord	15.4 lb (7 kg)	6 SS
SCOUT	Unisex	Rear Inflate	No	Black	No	XS-XL	No	6.6 lb (3 kg)	23.8 lb (10.8 kg)	None	15.4 lb (7 kg)	4 SS
RESCUE 911	Unisex	Rear Inflate	Yes	Black	Yes	XS-XL	Yes	9.5 (4.3 kg)	65 lb (29.5 kg)	35.3 lb (16 kg) Ripcord	19.8 lb (9 kg)	8 SS
SAR	Unisex	Rear Inflate	Yes	Black	Yes	XS-XL	Yes	12 lb (5.4 kg)	65 lb (29.5 kg)	35.3 lb (16 kg) Ripcord	19.8 lb (9 kg)	8 SS
EXPRESS TECH DELUXE	Unisex	Rear Inflate	No	Black	No	One Size Fits All	No	6.4 lb (2.9 kg)	22.7 lb (10.3 kg)	Optional	N/A	2 PL
CODE 3	Unisex	Rear Inflate	Yes	Black	No	One Size Fits All	No	6.5 lb (2.95 kg)	24 lb (10.89 kg)	24 lb (10.89 kg)	N/A	5 SS
RANGER JR	Youth	Rear Inflate	Yes	Black	No	XS	No	5.5 lb (2.5 kg)	23.8 lb (10.8 kg)	15.4 lb (7 kg) Ripcord	15.4 lb (7 kg)	4 SS
COVERT XT	Unisex	Rear Inflate	No	Black/Gray	No	XS-XL	No	5 lb (2.3 kg)	34 lb (15.4 kg)	15.4 lb (7 kg) Integrated	9.9 lb (4.5 kg)	4 PL
RESORT+	Unisex	Jacket Style	No	Black/Red	No	XS-XL	No	7.3 lb (3.3 kg)	35.3 lb* (16 kg*)	19.8 lb (9 kg)	9.9 lb (4.5 kg)	6 SS

* Lift Capacity varies depending upon size (stock large shown here).



// BCD SIZE CHART

RANGER LTD, RANGER, STILETTO, SCOUT, RESCUE 911, AND SAR			
WAIST (VEST SIZE)		TORSO (SHOULDER SIZE)	
35 in 89 cm	SM	14 in - 18 in 46 cm - 65.5 cm	SM
33 in - 41 in 84 cm - 104 cm	MD	18 in - 22 in 46 cm - 56 cm	MD
37 in - 45 in 84 cm - 114 cm	LG	22 in - 26 in 56 cm - 66 cm	LG
42 in - 50 in 107 cm - 127 cm	XL	26 in - 29 in 66 cm - 74 cm	XL

ZENA					
TORSO (SHOULDER SIZE)		BUST SIZE (VEST SIZE)		WAIST (VEST SIZE)	
20 in - 24 in 50 cm - 61 cm	XS	26 in - 30 in 66 cm - 76 cm	XS	10 in - 13 in 25.5 cm - 33 cm	XS
24 in - 30 in 61 cm - 76 cm	SM	30 in - 34 in 76 cm - 86 cm	SM	13 in - 16 in 33 cm - 41 cm	SM
26 in - 34 in 66 cm - 86 cm	MD	34 in - 37 in 86 cm - 93 cm	MD	15 in - 18 in 38 cm - 46 cm	MD
28 in - 44 in 56 cm - 66 cm	LG	37 in - 42 in 93 cm - 107 cm	LG	17 in - 19 in 43 cm - 48 cm	LG

FURY REG (XS - L)			
WAIST (VEST SIZE)		TORSO (SHOULDER SIZE)	
25 in - 43 in 63.5 cm - 109 cm		14 in - 24 in 35.5 cm - 61 cm	
FURY LRG (L - 2XL)			
WAIST (VEST SIZE)		TORSO (SHOULDER SIZE)	
37 in - 53 in 94 cm - 135 cm		22 in - 29 in 56 cm - 66 cm	

COVERT XT			
WAIST (VEST SIZE)		TORSO (SHOULDER SIZE)	
30 in - 45 in 76 cm - 114 cm	SM	20 in - 23 in 50 cm - 58 cm	SM
35 in - 50 in 89 cm - 127 cm	MD	22 in - 25 in 56 cm - 63.5 cm	MD
37 in - 52 in 84 cm - 132 cm	LG	23 in - 26 in 58 cm - 66 cm	LG
44 in - 56 in 112 cm - 142 cm	XL	23 in - 27 in 58 cm - 68.5 cm	XL

RANGER JR			
WAIST (VEST SIZE)		TORSO (SHOULDER SIZE)	
22 in - 28 in 56 cm - 71 cm	XS	12 in - 15 in 30.5 cm - 38 cm	XS

RESORT+			
WAIST (VEST SIZE)		TORSO (SHOULDER SIZE)	
24 in - 42 in 61 cm - 107 cm	SM	17 in - 20 in 43 cm - 50 cm	SM
30 in - 45 in 76 cm - 114 cm	MD	20 in - 23 in 50 cm - 58 cm	MD
35 in - 50 in 89 cm - 127 cm	LG	22 in - 25 in 56 cm - 63.5 cm	LG
37 in - 52 in 84 cm - 132 cm	XL	23 in - 26 in 58 cm - 66 cm	XL
44 in - 56 in 112 cm - 142 cm	2XL	23 in - 27 in 58 cm - 68.5 cm	2XL

COMPLETE BACKPLATE AND WING SYSTEMS



40LB BACKPLATE COMBO



30LB BACKPLATE COMBO



// COMPLETE BACKPLATE AND WING BCDs

// 40LB BACKPLATE BCD

To meet the needs of the military, commercial, SAR, and Public Safety Divers, the Backplate BCDs integrates all of the best features of our adaptable Backplate Combo, but with even more lift for the ultimate in reliability. Easily add crotch straps, scooter rings, sling bottles, shoulder pads, torch canisters and more. With added lift and endless options to customize, the Backplate BCDs is ready for any mission.

INCLUDES:

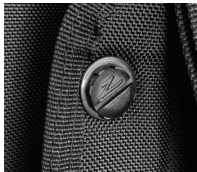
- Stainless steel backplate and deluxe harness
- Single cylinder mount
- 40 lb (18 kg) donut bladder assembly
- Single tank backplate adaptor (includes nuts and bolts)



Front View



Back View



Grommet
Detail

// 30LB BACKPLATE COMBO ^{CE} PFS

CUSTOMIZABLE FOR ALL DIVING CONDITIONS

The Backplate Combo is an expandable platform for building your ultimate setup. With capability to mount single or double cylinders, along with crotch straps, scooter rings, sling bottles, shoulder pads, torch canisters and more, Zeagle's durable stainless steel backplate with simple, single-webbing harness gives divers endless options to customize.

INCLUDES:

- Stainless steel backplate and deluxe harness
- Single cylinder mount
- 30 lb (13.6 kg) donut bladder assembly
- Single tank backplate adaptor (includes nuts and bolts)



519-BPC40

Backplate w/ Harness and 40 lb (18 kg) Donut w/inflator & RE Valve, Orange

[519-BPC](#)

30lb Backplate Combo Pack

// CUSTOM BACKPLATE AND WINGS

STEP 1 CHOOSE YOUR BACKPLATE

We know your tech needs are not always "off the shelf". We've made sure you get exactly the set-up you need by offering a way to customize the system to your specific specifications. Start by choosing your backplate and harness. Backplates are offered in both stainless steel and aluminum.

A CHOOSE YOUR BACKPLATE SYSTEM



STAINLESS STEEL
BACKPLATE



BLACK ANODIZED
ALUMINUM BACKPLATE



BLACK ANODIZED
ALUMINUM BACKPLATE
AND STANDARD HARNESS



BLACK ANODIZED
ALUMINUM BACKPLATE
AND DELUXE HARNESS

Those that purchase the Stainless Steel Backplate, must purchase the Harness Webbing separately and manually apply.

HARNESS SYSTEM SPECIFICATIONS

CHOOSE HARNESS IN TWO DIFFERENT CONFIGURATIONS:

STANDARD HARNESS:

- Plastic front buckle and adjustment for overall length
- Basic, technical harness

DELUXE HARNESS:

- Stainless steel D-rings
- Stainless steel front buckle
- Sternum strap
- Articulated shoulder
- Quick-release shoulder straps

Zeagle metal backplates have extended slots for easy cylinder mounting, can be used with single or twin cylinders without an adaptor, and can easily mount any current Zeagle bladder assembly.

BACKPLATES:

519-BP01BA-Z	Black Anodized Aluminum
519-BP01S-Z	Stainless Steel

HARNESSES:

519-SH01	Standard Harness (Webbing)
519-DH09	Deluxe Harness (Webbing)

BACKPLATE WITH HARNESS:

519-BPSHBA-09	Black Anodized Aluminum Backplate and Standard Harness
519-BPDHBA-09	Black Anodized Aluminum Backplate & Deluxe Harness

// CUSTOM BACKPLATE AND WING

STEP 2 CHOOSE YOUR BLADDER ASSEMBLY

A variety of Zeagle bladder systems are available, with capacities for 24 lb (11 kg) of lift to redundant 85 lb (38.5 kg) lift bladders in a single cover. Bladder assemblies include OPV with pull and corrugated hose with inflator.

CHOOSE YOUR BLADDER ASSEMBLY



30 LB DONUT BLADDER ASSEMBLY

PN: [7030BP](#)

- 30 lb (14 kg) lift
- Cordura® Outer Bag



40 LB DONUT BLADDER ASSEMBLY

ORANGE PN: [7040BP-Z](#)

- 40 lb (18 kg) lift
- Donut Bladder Assy w/ OPV and Airway

Tank straps not included



65 LB DONUT BLADDER ASSEMBLY

PN: [7065BP](#)

- 65 lb (29.5 kg)

// BACKPLATE AND WING ACCESSORIES

STEP 3 CHOOSE YOUR ACCESSORIES



ZIP TOUCH WEIGHT SYSTEM



RIPCORD WEIGHT SYSTEM

BACKPLATE AND WING ACCESSORIES

Tech accessories are an integral part of a tech BCD. Choose from this selection to finish off your custom tech BCD.

ZIP TOUCH WEIGHT SYSTEM

- 20 lb (9 kg) capacity

RIPCORD WEIGHT SYSTEM

- 30 lb (13.6 kg) capacity

SHOULDER PADS FOR STANDARD OR DELUXE HARNESS (NOT SHOWN)

CROTCH STRAP 2.5 CM WIDE FOR ZEAGLE 519-BP01S METAL BACKPLATE

- With adjustable quick release
- Two cable attachments

CROTCH STRAP 5CM WIDE FOR ZEAGLE 519-BP01S METAL BACKPLATE

- With adjustable quick release
- Two cable attachments

[519-WS120](#)

Zip Touch Weight System- 20 lb (9 kg)

[519-TA01](#)

Single Tank Backplate Adaptor (single cylinder)

[519-B501](#)

Strap Bladder for Backplates

[519-WS130RC](#)

Rip Cord Weight System- 30 lb (13.6 kg)

[519-SP09](#)

Shoulder Pads for Harness (deluxe or standard)

DIVING WITH TWIN TANKS?

The following items are recommended if you are starting to dive with dual tanks. With the Ranger LTD, Ranger, SAR or 911 BCDs

BOLT KITS (NOT SHOWN)

- 0.2 in (0.6 cm) Bolt and nut kit, contains 8 sets (for single cylinder mount)
- 5.5 in (14 cm) Bolts (for 7in/18cm tank)
- 6.5 in (16.5 cm) Bolts (for 7.9in/20cm tank)

TWIN BANDS TWIN CYLINDER

- 7.25 in (18 cm) Tank
- 8 in (20 cm) Tank

BLADDER ATTACHMENT STRAPS FOR DOUBLES (NOT SHOWN)

- Required to mount twin cylinders on applicable Zeagle BCDs. Sold separately.

MOUNTING PLATES TWIN CYLINDER/PAIR

- Provides reinforcement on a Zeagle BCD vest when attaching twin cylinders to twin-capable Zeagle BCDs

[519-BKBA](#)

Bolt Kit - 0.2 in (0.6 cm) Bolt and Nut (single cylinder)

[519-BK55](#)

Bolt Kit - 5.5 in (14 cm) Bolts (twin cylinder)

[519-BK65](#)

Bolt Kit - 6.5 in (16.5 cm) Bolts (twin cylinder)

[519-TCMP](#)

Mounting Plates (twin cylinder/pair)

[519-TB07](#)

Twin Bands- 7.25 in (18 cm) Tank (twin cylinder)

[519-TB08](#)

Twin Bands- 8 in (20 cm) Tank (twin cylinder)

[7281](#)

Bladder Attachment Straps

[7281S](#)

Bladder Attachment Strap - Small

[7281M](#)

Bladder Attachment Strap - Medium

[7281L](#)

Bladder Attachment Strap - Large

[519-SC01](#)

Single Cylinder Mount



TWIN BANDS



MOUNTING PLATES

CYLINDER BANDS

Individual replacement cylinder bands can be purchased for Zeagle BCDs and metal backplates. Pricing is per band.

7019	Band for single cylinder (*not for Sport BCDs)
7019T	Band for twin cylinders (Length: 49in/124cm)
05-0775	Sport Series Single Tank Band
05-0776	Covert XT Lower Anti Slip Band
111-5101	Non-slip cylinder band insert (small) (Length: 7in/18cm)
111-5103	Non-slip cylinder band insert (large) (Length: 9in/23cm)
111-7004	Cam buckle for cylinder band
519-SC01	Single Cylinder Mount



AIRWAY ASSEMBLY COMPONENTS AND OPVS

The airway assembly typically consists of the corrugated hose and shoulder Remote Exhaust Valve assembly. These components are sized, typically following the size and style of the BCD they are installed on.

XS-SM	15.9 in (40.6 cm) length
MD-LG	18.9 in (48 cm) length
XL-XXL	+22.8 in (+58cm) length

Pre 2014: Finer threading
Post 2014: Coarse threading



(Post 2014)

0518-S	RE:/Airways w/Inflator 16 in (40.6cm) SPORT Line
0526	RE:/Corrugated 18.9 in (48 cm)
0526-Z	RE:/Corrugated Hose 18.9 in (48 cm) (Post-2014)
0514-S	RE:/Corrugated Hose- Inflator- 15.9 in (40.6 cm) (Post 2014)
0514	RE:/Corrugated Hose- Inflator- 18.9 in (48 cm) (Post 2014)
0514-L	RE:/Corrugated Hose- Inflator- 22.8 in (58 cm) (Post 2014)

165-1016-Z	16 in (40.6 cm) Corrugated Hose (Post 2014)
165-1019-Z	19 in (48 cm) Corrugated Hose (Post 2014)
165-1018-Z	22.8 in (58 cm) Corrugated Hose (Post 2014)
111-9000L-16-Z	16 in (40.6 cm) Remote Exhaust (RE) Valve Assembly (Post 2014)
111-9000L-19-Z	19 in (48 cm) Remote Exhaust (RE) Valve Assembly (Post 2014)
111-9000L-23-Z	23 in (58 cm) Remote Exhaust (RE) Valve Assembly (Post 2014)
111-9370	Gasket for RE Valve Assembly
111-8000P-Z	Overpressure Valve (OPV) Assembly (Post 2014)
111-8000P-23-Z	OPV with 22.8 in (58 cm) Pull Cord for LTD Bladders (Post 2014)

LOCATION MARKERS



QD DELUXE SIGNAL TUBE
PLASTIC REEL W/ZIP

QD DELUXE SIGNAL TUBE
PLASTIC REEL

QD DELUXE SIGNAL TUBE W/ ZIP

- Lightweight 3.1 in (8 cm) thumb reel
- 115 ft (35 m) of nylon line
- Brass snap
- E-Z mount zip-on pouch

QD DELUXE SIGNAL TUBE

- Lightweight 3.1 in (8 cm) thumb reel
- 115 ft (35 m) of nylon line
- Brass snap
- E-Z mount pouch

[730-3001PZ](#) Deluxe Signal Tube with plastic reel / zipper

[730-3001P](#) Deluxe Signal Tube with plastic reel



SIGNAL TUBE
(STANDARD)

SIGNAL TUBE
(DELUXE-
ORANGE)

SIGNAL TUBE
(DELUXE-
YELLOW)

SIGNAL TUBES - 4.9 FT (1.5 M) LONG

- Standard
- Deluxe two color (orange and yellow)

[251-1001](#) Standard Signal Tube (Orange/Yellow)

[251-1002](#) Deluxe Signal Tube (Orange/Yellow)

CYLINDERS & CYLINDER ACCESSORIES



CYLINDERS

6 CU FT TANK W/O VALVE

9.4 in x 3.4 in (27cm x 8.6cm)

20 CU FT W/O VALVE (SANDED/BLACK)

Sanded 13.8 in x 5.2 in (35cm x 13.3cm)

Black 13.8 in x 5.2 in (35cm x 13.3cm)

TANK POUCH

- Holds 20 cu ft Redundant Air System
- 2 brass snaps

[331-1006](#) 6 cu ft tank w/o valve Sanded

[331-1002](#) 20 cu ft tank w/o valve Sanded

[331-1001](#) 20 cu ft tank w/no valve Black

[8079](#) Tank Pouch



6 CU. FT. QD PONY SYSTEM

- 6 cu ft tank
- Envoy II Octo Razor
- EZ Mount QD deploy pouch



20 CU. FT. QD PONY SYSTEM

- 20 cu ft tank
- Envoy II Octo Razor
- Cylinder comes in Sanded or Black finish



RAZOR II FIRST STAGE - YOKE/DIN

- Conical Precision HP Valve
- Unbalanced Diaphragm
- 5 Low Pressure Ports (3/8" - 24 UNF)
- 2 High Pressure Ports (7/16" - 20 UNF)
- Weight 1.88 lbs (.89 kg)
- Intermediate Pressure: 135-150 PSI (9-10 BAR)



PONY BOTTLE BAND KIT (METAL/PLASTIC)

- Image features Code 3 BCD

[750-6206](#) 6 cu ft QD Pony System (*not shown*)

[750-6206Z](#) 6 cu ft QD Pony System with Zip

[750-6220-SA](#) 20 cu ft Pony System - Sanded

[750-6220-BK](#) 20 cu ft Pony System - Black

[310-6300-S](#) Razor II 1st Stage

[8029](#) Pony Bottle Band Kit (Metal)

[8029HD](#) Pony Bottle Band Kit (Plastic)



// ZEAGLE REGULATORS

REGULATORS



F8
CE



ONYX II
CE



ENVOY II
CE



ENVOY II RAZOR
CE

OCTOS & INFLATORS



F8 OCTO
CE



ONYX II OCTO
CE



ENVOY II OCTO
CE



OCTO-Z II
CE



BX POWER INFLATOR



BREATHING EVOLVED.

THE MOST DEPENDABLE REGULATORS EVER MADE.

Zeagle regulators are assembled in the US, built under strict controls for quality in our own factory, using state-of-the-art equipment and procedures.

Our regulators are consistently top-rated in objective evaluations of breathing performance. They have exceeded the highest standards, including the DIN EN 250 and the U.S. Navy Group A, for working at depth. Another Navy test concluded that our Envoy had no competition in its price class - even regulators costing hundreds of dollars more didn't exceed its overall performance.

We've also focused on aspects of regulator design that don't turn up in typical testing, like durability, longevity and consistent performance in cold water or adverse conditions.

As in everything we do, our regulators are based on a simple modular design. Customers can select from several 1st and 2nd stages to best suit their needs without compromising quality. We also design to keep maintenance simple. For example, you only need one repair kit for all 1st stages and one repair kit for all 2nd stages to service all our regulators.

REGULATOR SPECIFICATIONS

REGULATOR	OVERVIEW	ENVIRONMENTALLY SEALED	DRY WEIGHT	BRAIDED HOSE	HP PORTS	LP PORTS	SERVICE INTERVAL
F8	Zeagle's flagship regulator. Environmentally and dry sealed.	YES	2.6 lb (1.2 kg)	YES	2	5	2 YEARS
ONYX II	Easy breathing high performing coldwater regulator	YES	2.6 lb (1.2 kg)	YES	2	5	1 YEAR
ENVOY II	Tremendous value with uncompromising performance	NO	3.2 lb (1.5 kg)	NO	2	5	1 YEAR
ENVOY II RAZOR	A unique combination of a valve and a 1st stage in a very light package	NO	4 lb (1.8 kg)	NO	1	4	1 YEAR
OCTOPUS							
F8 OCTOPUS	High performance octo with free flow control & adjustable cracking pressure		0.82 lb (0.4 kg)	YES			2 YEARS
ONYX II OCTOPUS	High performance with dual adjustment		1.2 lb (0.5 kg)	YES			1 YEAR
ENVOY II OCTOPUS	High performance with free flow control		1.25 lb (0.5 kg)	NO			1 YEAR
OCTO-Z INFLATOR/OCTOPUS	Combination regulator and BCD inflator		0.5 lb (0.22 kg)	NO			1 YEAR



// F8 ^{CE}

THE BEST PERFORMING DIAPHRAGM REG

The legendary Zeagle 1st stage is complemented with a new high-performing flagship 2nd stage. The result, the best performing diaphragm regulator on the market today.

- Case design that is smaller, lighter and molded from high impact resistant materials
- 1st stage is coated with flat black chrome plating in order to protect the brass from corroding. A very durable black PVD is used to coat the high use port plugs, to protect from wear and tear and corrosion.
- Front cover design with antisurge and stylized "Z" logo
- Smaller mouthpiece with super soft silicone and color accented tear resistant "Bite" lugs
- Exhaust valve with improved dryness and lower exhalation effort
- Inhalation effort control knob for better grip and style
- Threaded cover ring for improved safety
- Heat sink with improved materials and greater surface area to dissipate cold
- Zirconium-plated inlet tube for increased corrosion resistance
- Inhalation diaphragm with improved response and tear strength
- Redesigned poppet with improved tolerances
- Patented seat saving orifice
- Low pressure 2nd stage seat
- 2nd stage spring made from super alloy
- Color kits available

Dry Weight	2.6 lb (1.2 kg)
HP/LP	2/5 Ports
Environmentally Sealed	Yes
Braided Hose	Yes
Service Interval	2 Years

350-8310	F8 1st Stage & 2nd Stage Yoke
350-8320	F8 1st Stage & 2nd Stage DIN
310-8310-S	F8 Yoke
310-8320-S	F8 DIN
320-8300-S	F8 2nd Stage (Black)
345-8000	F8 Black Color Kit
345-8001	F8 Blue Color Kit
345-8002	F8 Aqua Color Kit
345-8003	F8 Pink Color Kit
345-8004	F8 Purple Color Kit

COLOR KIT OPTIONS:



ONYX II
YOKE



ONYX II
DIN

//ONYX II ^{CE}

COLD-WATER BREATHING HAS NEVER BEEN SO EFFORTLESS

With the same attractive finish and outstanding performance as its predecessor (the Onyx), the Onyx II fills the need for those that find themselves in cooler water. Its internal structure allows direct airflow through the 1st stage, providing lower turbulence for outstanding performance.

Dry Weight	2.75 lb (1.25 kg)
HP/LP	2/5 Ports
Environmentally Sealed	Yes
Braided Hose	Yes
Service Interval	1 Year

[350-0310](#) Onyx II 1st Stage & 2nd Stage Yoke

[350-0320](#) Onyx II 1st Stage & 2nd Stage DIN

[310-0310-S](#) Onyx II Yoke 1st Stage

[310-0320-S](#) Onyx II DIN 1st Stage

[320-0300-S](#) Onyx II 2nd Stage

ENVOY II
YOKE



ENVOY II
DIN

RAZOR II

//ENVOY II ^{CE}

TREMENDOUS VALUE. UNCOMPROMISING PERFORMANCE.

The Envoy II is an incredible value, meeting or exceeding the performance of regulators that cost much more. Envoy II is an economical regulator that doesn't compromise on performance or reliability. Its lightweight 1st stage, with balanced diaphragm, is available in DIN or Yoke, and its 2nd stage has a downstream valve and Dive/Pre Dive Venturi control (with 28.6 in/76.2 cm hose length).

Dry Weight	2.4 lb (1.1 kg)
HP/LP	2/5 Ports
Environmentally Sealed	No
Braided Hose	No
Service Interval	1 Year

[350-3310](#) Envoy II 1st Stage & 2nd Stage Yoke

[350-3320](#) Envoy II 1st Stage & 2nd Stage DIN

[350-6300](#) Razor 1st Stage & Envoy 2nd Stage

[310-3310-S](#) Envoy II Yoke 1st Stage

[310-3320-S](#) Envoy II DIN 1st Stage

[310-6300-S](#) Razor II 1st Stage

Serialized (Does not include Transfiller Yoke)

[320-3300-S](#) Envoy II 2nd Stage

//OCTOS AND INFLATORS



F8 OCTO C€

Lightweight, high performance with free flow control, heat sink and adjustable cracking pressure.



BX POWER INFLATOR

Standard POWER inflator with Zeagle's BX coupling connection.



ONYX II OCTO C€

Free flow control and adjustable cracking pressure.

[320-8310](#)

F8 Octo (Yellow)

[320-0310](#)

Onyx II Octo (Yellow)

[320-3310](#)

Envoy II Octo (Yellow)

[320-7300-BK](#)

Octo-Z II Black

[320-7300-YL](#)

Octo-Z II Yellow

[112-1001BX](#)

BX Power Inflator



ENVOY II OCTO C€

High performance with free flow control.



OCTO-Z II C€

Combination BCD inflator and alternate air source. Available in Black or Yellow.

//ADAPTERS AND CONVERSION KITS

[330-0001](#)

Din to Yoke Adapter

[345-8320](#)

F8 Yoke to Din Conversion Kit

345-8310

F8 Din to Yoke Conversion Kit

[345-1010](#)

Conversion kit, 50D, DS-V, Envoy, Flathead VI 1st stage yoke to DIN

[345-1017](#)

Conversion kit, Flathead 7 & ReZort, 1st stage yoke to DIN

[345-0210](#)

Conversion kit, Onyx, 1st stage DIN to yoke

[345-1020](#)

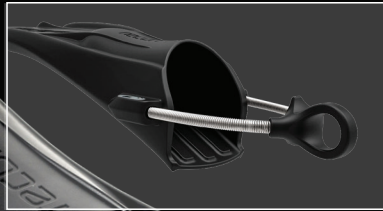
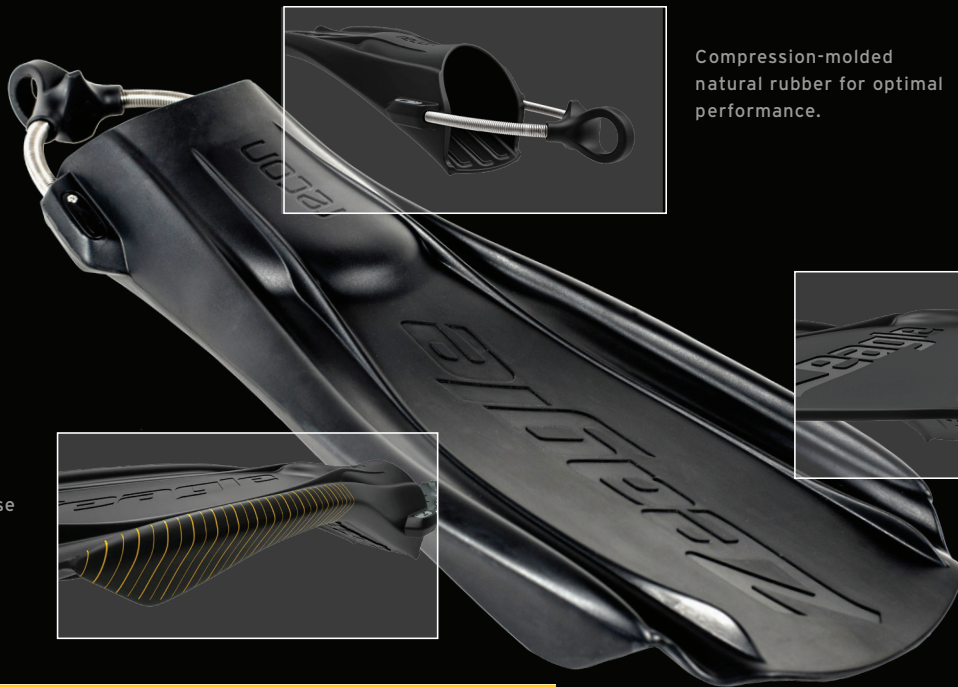
Conversion kit, 50D, DS-V, Envoy, Flathead VI 1st stage DIN to yoke

[345-1027](#)

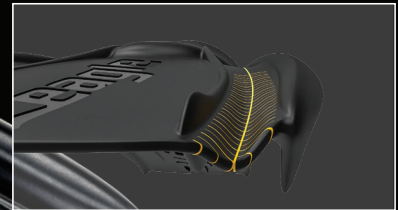
Conversion kit, Flathead 7 & ReZort, 1st stage DIN to yoke

CE ZEAGLE RECON FIN THERE'S MORE BEYOND THE SURFACE

The Recon is a complete rethink of basic fin geometry, angles, surfaces and thicknesses, combining uncomplicated design with the latest aquadynamic technology. The result is the most revolutionary technical fin on the market, capable of industry-leading thrust and control for all types of alternative kicking styles.

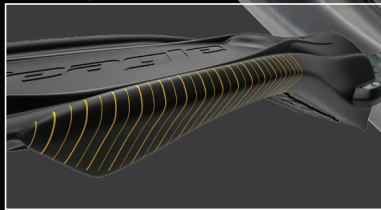


Compression-molded natural rubber for optimal performance.



Four bottom strakes, two top strakes, for thrust, less turbulence and a stable flutter kick.

Two thick side ribs for more elastic response where flex and snapback is needed.



SIZE	USA	EU	UK	JP
MD	6 - 8.5	39 - 41	6 - 8	24.1 - 25.4
LG	9 - 11	42 - 43	9 - 10.5	26 - 27.9
XL	11.5 - 13	44 - 46	11 - 12.5	28.3 - 29.4

MULTI-TOOL AVAILABLE

Zeagle multi-tool can be used with the Recon fin, as well as all Zeagle regulators and masks.



COLOR ACCENT KITS for buckle and soft pad.



8500

Recon Fin - Black Sizes Available: [M](#), [L](#), [XL](#)

[345-7001](#)

Recon Fin Red Color Kit

[345-7002](#)

Recon Fin Yellow Color Kit

[345-7003](#)

Recon Fin Blue Color Kit

347-0108

Zeagle Fin/Mask Multi-tool

370-0100-BK

Strap Kit Assy, Recon Fin

// ZEAGLE MASKS



A STRONG
DUO. WITH
PERSONALITY.

Zeagle's Scope masks combine durability and comfort with accessories that are customizable. Simple, over-molded design is hard-wearing, and a color strap option provides a touch of personality. Scope Dual and Mono are strong, personable masks that will last.



Includes a Zeagle Air Box.

// SCOPE DUAL^{CE} SUBMERGED IN TOUGHNESS

Scope Dual enters the market by completely redefining durability. It's the only dual lens mask with a patented 100% submerged subframe with exposed silicone for increased protection. Customizable accessories like interchangeable optical lenses and personalized straps in multiple color options provide a touch of style for every dive.

- Proprietary Zeagle over-molded frameless design
- Soft-touch silicone face seal
- One-button thumb-operated buckle for easy adjustments on the fly

[7500](#) Scope Dual (Silicone Strap included)

[9903](#) Scope Elastic Strap Color Kits
Black, Yellow, Blue, Aqua, Pink, Purple

[9904](#) Scope Silicone Strap
Black

[347-0108](#) Scope Multi-tool





Includes Zeagle Air Box.



// SCOPE MONO €

SEE MORE. EVERY DIVE.

With Scope Mono, seeing truly is believing. Its low volume, wide field of vision gives the precision to focus on every underwater moment in full panoramic view. Large nose pocket and soft-touch silicone face seal provides unparalleled comfort; interchangeable straps in silicone or elastic with various color options give your customers more choice to customize and coordinate every dive.

- Proprietary Zeagle over-molded frameless design
- Low volume, wide field of vision
- Large nose pocket for comfort
- Soft-touch silicone face seal
- One-button thumb-operated buckle for easy adjustments on the fly

[6500](#)

Scope Mono (Elastic Strap included)

[6500-GY](#)

Scope Mono - Grey Camo (Elastic Strap)

[9903](#)

Scope Elastic Strap Color Kits

Black, Yellow, Blue, Aqua, Pink, Purple

[9904](#)

Scope Silicone Strap

Black

[347-0108](#)

Scope Multi-tool

SUPERIOR AIR BOX PROTECTION

Scope Dual and Scope Mono both come with Zeagle's unique air box package. Its stackable, nose-shaped design connects the lid and bottom case to form two positions: a vented box to repel moisture, and an airtight box to prevent water, dirt and dust.



POSITION 1: vented box to prevent moisture



Rotate lid and bottom to seal mask in and protect



POSITION 2: airtight seal to prevent water, dirt and dust

CUSTOM COLOR KITS AND MULTI-TOOL AVAILABLE

Dual comes standard with gray silicone strap. Mono comes standard with gray elastic strap. Additional custom strap and color options available.

Custom Colors Available: **Black, Yellow**

Straps include a Zeagle Multi-Tool, that can be used for all Zeagle regulators, masks and fins. Multi-Tool can also be ordered separately.



[347-0108](#)

Zeagle Fin/Mask Multi-tool

// ZEAGLE SNORKELS



// TANGO SNORKEL^{CE}

The Zeagle Tango snorkel is a compact and rugged J tube design. Built with a comfortable silicone mouthpiece and TPR down tube for easy breathing.

[9500](#)

Tango Snorkel, Black

[9500 - RO](#)

Tango Snorkel, Rescue Orange

[9500 - GY](#)

Tango Snorkel, Grey Camo

GET THE COMPLETE SET

RECON / SCOPE / TANGO



// ZEAGLE INSTRUMENTS AND HOSES

// INSTRUMENTS €

- One-piece brass body is shock resistant and highly durable
- Ergonomic sleek styling of the housing which gives the instrument a low and compact profile and comfortable grip
- Comes with a thermoplastic hose for flexibility to provide ease of gauge reading
- Two integrated attachment points at the top provide multiple options for gear configuration
- Custom Zeagle dial, easy to read and attractive
- Copper Beryllium spiral-wound rings ensure greater reliability and miniaturization, bourdon tube design provides measurement accuracy
- Available in both imperial and metric

372-9411	Single Gauge - 5000psi 11 in hose w/Black Rubber Hose
372-9411M	Single Gauge-5000psi 11 in hose w/Black Rubber Hose (Metric)
372-9432	Single Gauge - 5000psi 32 in Black Rubber Hose Instruments
372-9432M	Single Gauge - 5000psi 32 in Black Rubber Hose (Metric)
372-9415	Combo 2 Gauge SPG/MDL w/Black Rubber Hose
372-9415M	Combo 2 Gauge SPG/MDL w/Black Rubber Hose (Metric)
372-9705	Slimline Co-Pilot Console w/Black Rubber Hose
372-9705M	Slimline Co-Pilot Console w/Black Rubber Hose (Metric)



// HOSES

165-1015	32 in (81 cm) 5000 PSI (300 BAR) SPG Hose
165-1031	24 in (61 cm) Regulator Hose, 0.37 in (0.95 cm) Fitting
165-1032	26 in (66 cm) Regulator Hose, 0.37 in (0.95 cm) Fitting
165-1033	28 in (71 cm) Regulator Hose, 0.37 in (0.95 cm) Fitting
165-1034	24 in (61 cm) Regulator Hose, 0.37 in (0.95 cm) Fitting (standard on most Zeagle regulators)
165-1300	30 in (76 cm) Black Braided Regulator Hose, 0.37 in (0.95 cm) Fitting (standard on Flathead and Onyx regulators)
165-1035	32 in (81 cm) Regulator Hose, 0.37 in (0.95 cm) Fitting
165-1036	36 in (91 cm) Regulator Hose, 0.37 in (0.95 cm) Fitting (standard on most Zeagle octopus regulators)
165-1360	36 in (91 cm) Yellow Braided Regulator Hose, 0.95cm Fitting (standard on Z and ZO octopus regulators)
165-1037	48 in (122 cm) Regulator Hose, 0.37 in (0.95 cm) Fitting
165-1038	84 in (213 cm) Regulator Hose, 0.37 in (0.95 cm) Fitting
165-1039	108 in (274 cm) Regulator Hose, 0.37 in (0.95 cm) Fitting
165-1020	28 in (71 cm) Low Pressure, QD Inflator Hose
165-1325	36 in (91 cm) Low Pressure, QD Inflator Hose
165-1027	27 in (68.5 cm) Low Pressure, QD Inflator Hose for Octo-Z
112-9027-AA	Hose Adapter (allows standard inflator to be used with Octo-Z hose fitting)
342-7241-AA	Octo-Z Hose Fitting (install into any 0.37 in (0.95 cm) regulator hose)

Zeagle®

// TESTED. TRUSTED.